



Horslow Street, Sandy, SG19 2NX  
£475,000



LATCHAM ———  
DOWLING

ESTATE AGENTS



**\*\*\* EXTENDED THREE BEDROOM SEMI DETACHED HOME IN POPULAR NON ESTATE LOCATION AND WITH TWO EN SUITES AND A SEPARATE DETACHED GARDEN OFFICE\*\*\***

Occupying a larger than average plot, this unique home has undergone considerable extension and modernisation works in recent years and now offers the versatility of having annexed the main house to provide a large, modern open plan kitchen/family room with bi-folding doors opening to the rear, as well as a separate utility room and a second ground floor kitchen/living room. There are two separate staircases leading up to the three double bedrooms on the first floor, with the principle bedroom benefiting from a dressing area and a large en suite bathroom and the second bathroom being 'Jack & Jill' from the landing and from bedroom two.

Outside offers ample off road parking for multiple vehicles and with an electric gate for extra security, low maintenance garden/entertaining areas, an impressive Koi pond and access to the detached 'Garden Office' which could be ideal for anyone looking to work from home or as a home gymnasium/games room etc.

Viewing is absolutely essential to fully appreciate this truly unique property.

**Entrance Via**

**Entrance Hall**

6'6 x 7'6 max (1.98m x 2.29m max)

**Cloakroom**

6'7 x 3.5 min (2.01m x 0.91m.1.52m min)

**Kitchen/ Family Room**

25'0 max x 11'6 (7.62m max x 3.51m)







**Utility Room**  
6'8 x 4'10 (2.03m x 1.47m)

**Annexed Kitchen/ Living Room**  
14'0 max x 12'1 (4.27m max x 3.68m)

**First Floor Landing**  
23'3 x 7'1 max (7.09m x 2.16m max)

**Bedroom One**  
16'4 x 11'7 max (4.98m x 3.53m max )



**En Suite Bathroom**  
12'1 max x 9'1 max (3.68m max x 2.77m max)

**Bedroom Three**  
11'6 x 8'3 (3.51m x 2.51m)

**Jack & Jill Bathroom**  
7'4 x 5'6 (2.24m x 1.68m)

**Bedroom Two**  
12'2 x 11'5 (3.71m x 3.48m)

**Garden Office**



**Main Room/ Kitchen Area**  
24'3 x 11'7 (7.39m x 3.53m)

**Bedroom Area**  
17'5 x 7'6 (5.31m x 2.29m)

**En Suite Shower Room**  
6'6 x 4'10 (1.98m x 1.47m)

**Outside**

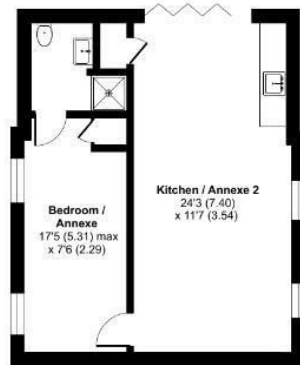




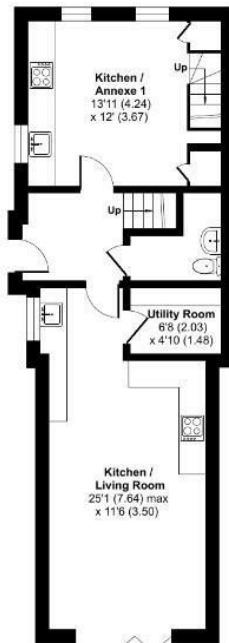
## Horslow Street, Potton, Sandy, SG19

Approximate Area = 1814 sq ft / 168.5 sq m

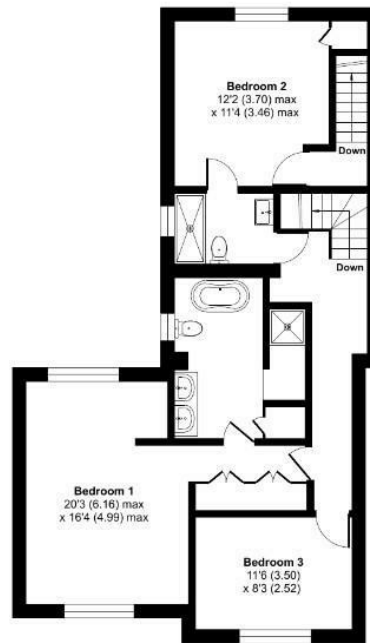
For identification only - Not to scale



ANNEXE

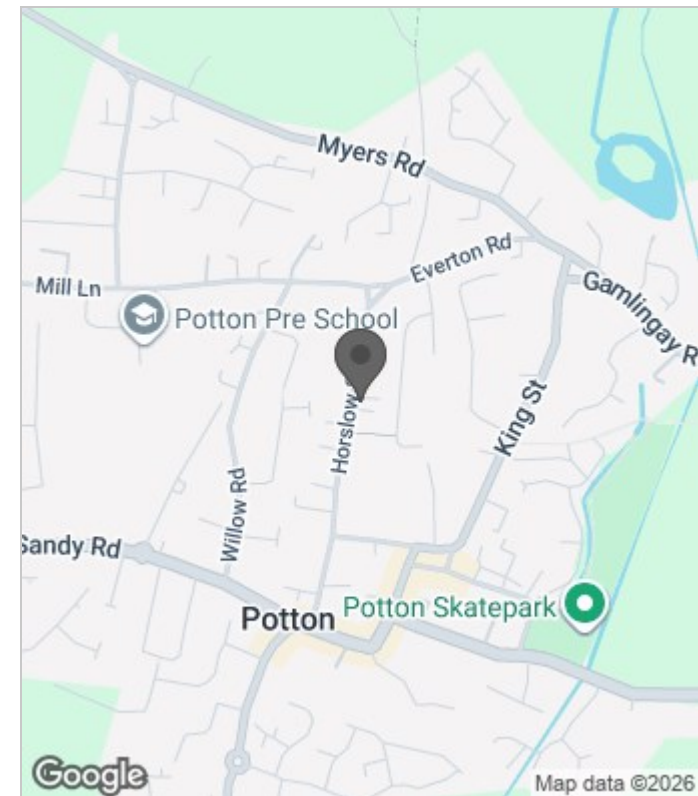


GROUND FLOOR /  
ANNEXE GROUND FLOOR



FIRST FLOOR /  
ANNEXE FIRST FLOOR

Floor plan produced in accordance with RICS Property Measurement 2nd Edition, incorporating International Property Measurement Standards (IPMS2 Residential). © nichcom 2026. Produced for Latcham Dowling Ltd. REF: 1397437



### Energy Efficiency Rating

	Current	Potential
Very energy efficient - lower running costs		
(92 plus) <b>A</b>		
(81-91) <b>B</b>		
(69-80) <b>C</b>		
(55-68) <b>D</b>		
(39-54) <b>E</b>		
(21-38) <b>F</b>		
(1-20) <b>G</b>		
Not energy efficient - higher running costs		
<b>England &amp; Wales</b>		EU Directive 2002/91/EC

These particulars, whilst believed to be accurate are set out as a general outline only for guidance and do not constitute any part of an offer or contract. Intending purchasers should not rely on them as statements of representation of fact, but must satisfy themselves by inspection or otherwise as to their accuracy. No person in this firm's employment has the authority to make or give any representation or warranty in respect of the property.